



NATE FULLER, EXECUTIVE DIRECTOR  
2300 N BENTON CENTER ROAD • BENTON HARBOR, MI 49022  
WWW.SARETT.ORG • 269.927.4832 • SARETT@SARETT.ORG

# Isle Royale National Park

## With Sarett Nature Center

July 8<sup>th</sup>-14<sup>th</sup>, 2024



Join Sarett Nature Center as we travel to Isle Royale National Park to do some hiking and wildlife watching. Isle Royale is home to Moose and Wolves, the wild North Woods, ever changing weather, cool climate, and the crystal-clear waters and rugged shoreline of Lake Superior. The archipelago is composed of many parallel ridges resulting from ancient lava flows which were tilted and glaciated. Isle Royale has 165 miles of scenic hiking trails and 36 campgrounds for backpackers, paddlers, and recreational boaters. The island offers excellent fishing, historic lighthouses and shipwrecks, ancient copper mining sites, and plenty of spots to observe wildlife. Isle Royale is accessible only by boat or float plane. Dogs, cats, and other pets are not allowed within park boundaries. It is relatively untouched by direct outside influences and serves as a living laboratory and is a United States Biosphere Reserve.

Isle Royale is located 56 miles from the Keweenaw Peninsula in Michigan and 15 miles from the shores of Minnesota and Ontario out in Lake Superior. The park encompasses a total area of 850 square miles including submerged lands which extends 4 ½ miles out into Lake Superior. It is 45 miles long and nine miles wide at its widest point. Ninety nine percent of the land mass is federally designated wilderness and there are no roads on the island.

The tour begins on **Monday, July 8 at 7:30 am** as we depart the nature center by Sarett's vans for Houghton. We will make a quick stop along the way. Lodging is at the Hampton Inn, Houghton.

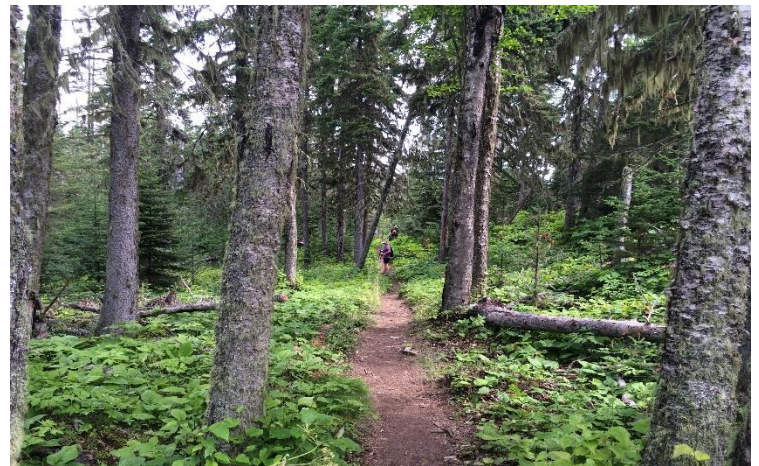
Once in town, you will have the evening free to wander around or relax in your room. Dinner will be on your own in town. While out for dinner, you will need to pick up lunch for tomorrow's boat ride to Isle Royale National Park via the Ranger III.



**Tuesday, July 9<sup>th</sup>**, our day will start early with a complementary hot breakfast at the Hampton Inn. We need to be at the dock of the Ranger III in Houghton at 8:00 am to board the boat. The boat ride to Isle Royale will take approximately 6 hours depending on weather and conditions on Lake Superior. The group will arrive at the Northwest end of the island and check into the Rock Harbor Lodge where we will spend the next four nights. The lodge will pick up your luggage and place it in your

rooms. Rock Harbor Lodge is located on the shore of Lake Superior. Each room has a private shower/bath combination, steam heat, and a view of the lake. The Island has two restaurants, the Greenstone Grill and the Lighthouse Restaurant. The Dockside Store offers standard groceries, freeze dried camping meals, bagged ice, souvenirs, and the like. All meals on the island will be on your own. The Lighthouse Restaurant is open for breakfast and dinner only. The Greenstone Grill is open for breakfast, lunch, and dinner. It also has a nice selection of grab and go items, which we will take advantage of for the days where we will do some longer hikes and have lunch out on the trail. If time permits, we will take a short hike before dinner.

**Wednesday, July 10<sup>th</sup> through Friday July 12<sup>th</sup>**, we will spend the next three full days exploring the island enjoying everything that the north woods have to offer, and we will keep an eye out for moose! While on the island, naturalist guide services will be provided by Mike Mahler and one other Sarett Naturalist to be named later based on the make-up of the group. We will conduct guided walks, birding walks, day hikes and arrange for two boat excursions on the MV Sandy. Park Rangers conduct evening programs at Rock Harbor most evenings.



**Saturday, July 13<sup>th</sup> at 9:00 am**, we will depart Isle Royale National Park via the Ranger III. All luggage will be picked up from your rooms and taken to the ship. We will board by 8:30 am and plan to arrive back in Houghton by approximately 3:00 pm. Please pick up a grab and go lunch from the Greenstone Grill to eat on the boat. Once we arrive at the dock in Houghton, we will load the Sarett vans and drive to Munising where we will stay the night at the Comfort Inn. We will find a restaurant near the hotel for dinner. If time permits, we will take a short hike before or after dinner.





**Sunday, July 14<sup>th</sup>**, after a complimentary breakfast at the hotel, we will load the vans at 8:00 am and begin the long drive back to the nature center. In the morning, we will make a stop at nearby Seney National Wildlife Refuge where we will spend the morning exploring the refuge. We will take the wildlife drive where we have a chance to see Bald Eagles, Common Loons, and a variety of other wildlife. After visiting Seney, we will make a lunch stop en route to Sarett. Plan to arrive back at the nature center in the early evening.

**Included in this tour:**

- Transportation to and from Isle Royale National Park via Sarett Nature Center Vans.
- National Park Entrance Fees
- Round-trip passage aboard the Ranger III
- All lodging for the four nights stay at Rock Harbor Lodge
- Two sightseeing boat tours aboard the 40 passenger MV Sandy
- Sarett Naturalist guide services while on the tour
- Tips for baggage handling
- One night lodging at the Hampton Inn, Houghton
- One night lodging at Comfort Inn, Munising
- Two complementary breakfasts (one at Hampton Inn & one at Comfort Inn)

**Not included:** Meals not specified and items of a personal nature.

**Please note that Isle Royale National Park only accepts credit cards on the island.**

**The cost of the trip is \$1950 per person based on double occupancy.** You must be a Sarett Member (Family membership \$50, individual membership \$40).

**Group Size:** Limited to 14 participants.

**Physical Difficulty:** Easy to Moderate. The trails on Isle Royale are rough, some of them are all on rock while others are dirt with exposed tree roots or rocks in the trail. Trails that pass through wet areas could be muddy or traversed by a boardwalk that is a single board wide. The length of the hike will depend on the trail that we choose for a particular day. Generally, plan to hike between 2-6 miles with most hikes around 4 miles. Sturdy hiking boots are recommended, and you may want to bring a walking stick or hiking poles.

**Deposit:** To ensure your place on this tour a deposit of \$300 per person is required. A \$75 cancellation fee is charged if a participant cancels, and we are not able to fill their place before June 1, 2024. No refund is possible if a cancellation occurs within 30 days of departure. Travel insurance is highly recommended. Deposits may also be made by telephone using a credit card. Call Sarett at (269) 927-4832.

**Final Payment Due:** Final payment of \$1,650.00 is due on or before Friday, June 14<sup>th</sup>, 2024.

**Method of Payment:** Checks or cash are preferred but credit cards are accepted. Please mail or drop off your check to Sarett Nature Center, 2300 Benton Center Rd., Benton Harbor, MI 49022.

**Cancellation Policy:** Any refunds are subject to what is recoverable.

**Travel Insurance is highly recommended.**

**Responsibility:** Sarett Nature Center reserves the right, at their sole discretion, to make any changes in the itinerary and hotels should that become necessary and is not responsible to any person for expenses, loss of time, money or happenings resulting from a change of tour scheduling. Sarett Nature Center reserves the right to accept, decline, or retain any person as a member of the tour, and is not responsible for any losses or damages of personal property, injuries, expenses, or damages incurred or claimed by any tour member.

**Contact Information:** Please include with your check, your e-mail address, phone numbers, and mailing address.

**Sarett Trip Leaders:** Mike Mahler and one other Sarett Naturalist to be determined based on the makeup of the group.

**Questions:** Please call Mike at Sarett at (269)-927-4832 or e-mail [mikem@sarett.org](mailto:mikem@sarett.org)